

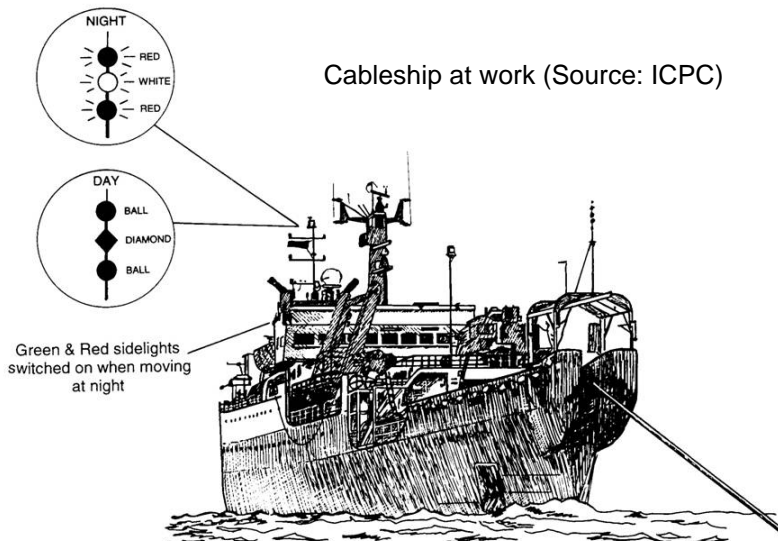
FSMTC Communications Cable

The FSMTC Communications Cable is a high capacity fiber optic cable scheduled for installation during October 2009 – January 2010. It is owned by the Federated States of Micronesia Telecommunications Corporation (FSMTC) and installed by Tyco Telecommunications. The estimated cable route and position list are attached.

The 140-meter cables ship Tyco Durable will conduct the main installation. In order to ensure safe operations, international law requires that vessels and fishing gear be kept at least one nautical mile away from a working cables ship. A ship laying cable displays signals for restricted maneuverability (by day, the shapes ball-diamond-ball in a vertical line, and by night the vertical lights red-white-red). Modern fiber optic cables are only about 17-30 mm in diameter. They can be damaged by contact with fishing gear including drifting tuna longlines and FAD's. After installation we ask that vessels avoid using anchors or other gear that contacts the seabed within 1/2 mile of the cable route.

If a cable is damaged by willful or negligent action, such action may be illegal, unless it is done to protect the safety of vessels or crew. Cable breaks are very expensive and they must ultimately be paid by users of communications services. However, if a vessel sacrifices its anchor or gear to avoid damaging a cable, it may be compensated, if reasonable precautions were taken beforehand and evidence of the loss is provided.

If your anchor or gear does snag something that may be the FSMTC cable, please don't try to lift it. After some initial slack is taken up, it may become extremely hard to lift. This could endanger your vessel and crew. Moreover active cables may carry high voltage electrical current.



For general information
please contact:

Joseph J. Johnny
Plant & Engineering Manager
FSM Telecommunications Corporation

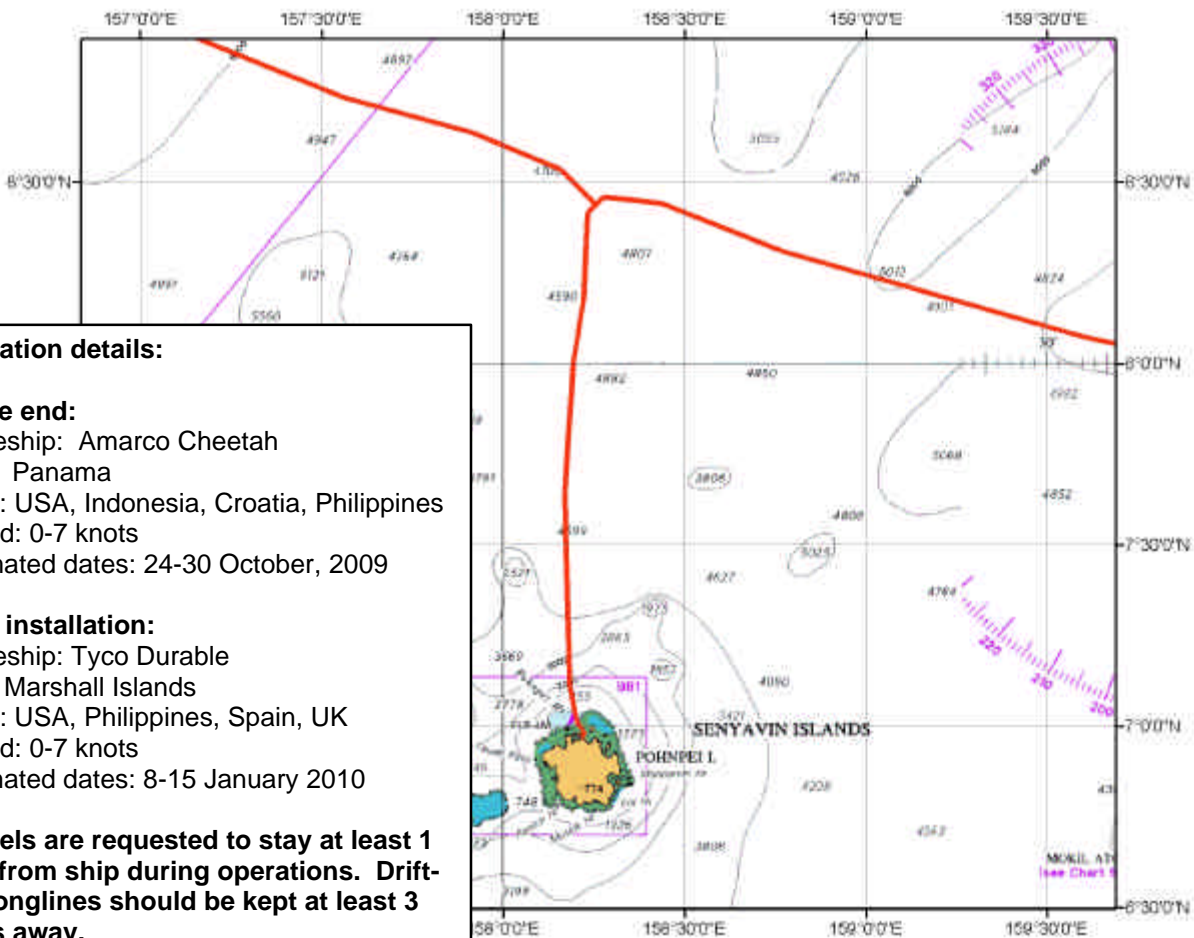
Phone: +691 320 2740

Mobile: +691 920 1196

Email: jjohnny@mail.fm

FSMTC Cable Route		
Pohnpei to Branching Unit		
WGS84– Issue 5 - 15 Jul 09		
Latitude	Longitude	Depth
North	East	(m)
06 57.9782	158 12.8957	0
06 58.0396	158 12.9852	1
06 58.0887	158 13.0567	1
06 58.3213	158 13.1747	2
06 58.9927	158 13.2953	9
06 59.0958	158 13.3015	17
06 59.2005	158 13.2921	25
06 59.2734	158 13.2422	47
06 59.3483	158 13.1499	56
06 59.5339	158 12.9702	61
06 59.8318	158 12.8413	64
07 00.1224	158 12.5892	78
07 00.3535	158 12.4875	92
07 00.4692	158 12.3839	96
07 00.5665	158 12.2599	102

Latitude	Longitude	Depth
North	East	(m)
07 00.6508	158 12.2004	109
07 00.8624	158 12.1676	275
07 01.1549	158 12.0737	500
07 01.1956	158 12.0606	523
07 04.2050	158 11.4663	1800
07 06.5385	158 11.0054	2507
07 12.3539	158 10.8393	3492
07 12.4149	158 10.8376	3500
07 32.1103	158 10.2747	4548
07 38.8791	158 10.1818	4700
07 59.9609	158 11.5827	4872
08 10.5612	158 13.2965	4900
08 20.2182	158 13.7560	4900
08 25.0080	158 13.9840	4900
08 26.2780	158 15.2740	4900
08 27.8643	158 13.6978	4900



Operation details:

Shore end:

Cablesip: Amarco Cheetah
 Flag: Panama
 Crew: USA, Indonesia, Croatia, Philippines
 Speed: 0-7 knots
 Estimated dates: 24-30 October, 2009

Main installation:

Cablesip: Tyco Durable
 Flag: Marshall Islands
 Crew: USA, Philippines, Spain, UK
 Speed: 0-7 knots
 Estimated dates: 8-15 January 2010

Vessels are requested to stay at least 1 mile from ship during operations. Drifting longlines should be kept at least 3 miles away.